

**SWC22 - DRESSING PLAN**

**DRESSING ITEMIZED**

NOTE: LIST IS NOT FINALIZED!

- SET DEC**
- TUSKS (QTY. 2)
  - CARBONITE BLOCKS (QTY. 2)
  - TUSKEN LAMPS (QTY. 4)
  - CAMPFIRE
  - TATOOWNE II DRESSING (TBD)
  - STORMTROOPER HEADS ON SPIKES (QTY. 7)
  - MAYOR'S OFFICE DRESSING (TBD)
  - NEVARRO AWNING (QTY. 2)
  - FOOD CART
  - STREET DRESSING (TBD)
  - BOBA THRONE
  - BOBA SPIT
  - HANGAR DRESSING (TBD)
- PROPS**
- BASSINET (QTY. 2)
  - EGG TANK (ON PEDESTAL)
  - ZERO'S HEAD
  - BLACK MELONS (QTY. 5)
  - GAFFI STICKS (QTY. 4)
  - WEPAONS STACK
- COSTUMES**
- MANDO MANNEQUIN - ICE PLANET VERSION
  - MANDO SEATED IN PILOT CHAIR EP 103
  - SEATED TUSKEN TRIBE MEMBER #1
  - SEATED TUSKEN TRIBE MEMBER #2
  - SEATED TUSKEN TRIBE MEMBER #1 FROM MS2
  - SEATED TUSKEN TRIBE MEMBER #2 FROM MS2
  - CHIEF TUSKEN
  - TUSKEN WARRIOR WOMAN
  - CHILD TUSKEN
  - BITH COSTUME
  - GARSA BLACK DRESS
  - MARSHAL COBB
  - GARSA'S WHITE DRESS
  - GARSA'S GOLD DRESS
  - GARSA'S GENERIC MALE PATRON
  - NIKTO BIKER (X1) (WITH SANTA SUITS)
  - NIKTO BIKER (X2) (WITH SANTA SUITS)
  - NIKTO BIKER (X3) (WITH SANTA SUITS)
  - NIKTO BIKER (X4) (WITH SANTA SUITS)
  - MAJORDOMO
  - PYKE #1 - PILGRIM BOSS
  - PYKE #2 - PILGRIM TRAVELER
  - LANG - GUARD W/ MORGAN
  - GUARD #2 - GUARD W/ MAYOR MOK SHAIZ
  - KLATOONIAN BUTCHER #1
  - KLATOONIAN BUTCHER #2
  - KLATOONIAN BUTCHER #3
  - AHSOKA TANCO
  - BOKATAN KYRZE
  - KOSKA WITH HELMET
  - MAHI MAHI DOCK WORKER
  - MORGAN ELSBETH
  - ARM CRER
  - JAWA #1
  - JAWA #2
  - JAWA #3
  - VENDOR WITH MASKS #1
  - VENDOR WITH MASKS #2
  - GREEF KARGA
  - NEVARRO COSTUME #1
  - NEVARRO COSTUME #2
  - BOBA FETT
  - FENNEC SHAND
  - JAWA #4
  - JAWA #5
  - PELLI MOTTO
  - MANDO (INSIDE COCKPIT)
  - RANCOR KEEPER
  - KLATOONIAN - KING DON
  - AQUALUSH - ASTRONAUT DON
  - TRANDOSHAN #1
  - MOSSIMO
  - CARSON TEVA - PILOT
  - QUINOA FISHERMAN
  - STORMTROOPER - WITH MOSSIMO
- LEGACY**
- KRAYT
  - DUMMY BABY (QTY. 2)
  - FROG LADY
  - BANTHA
  - LIZARD DOG
  - DROIDS (TBD)
  - SALACIOUS CRUMB
  - RDB
  - GAMORREAN (QTY. 2)
  - JERBA HEAD
  - TONTON HEAD
  - RANCOR HEAD
  - ANIMATRONIC BABY
  - DROIDS (TBD)
  - MAQUETTES (TBD)
  - RAZOR CREST
  - N1
  - T-6 SHUTTLE
  - IMPERIAL LIGHT CRUISER
  - RANCOR PIT
  - PALACE GATE
  - TRASH PLANET
- MINIATURES**
- RAZOR CREST COCKPIT
  - ROCKS (QTY. 4)
  - TUSKEN TENTS (QTY. 2)
  - COBB VANTH'S SPEEDER
  - MANDO'S SPEEDER
  - NIKTO BIKES (QTY. 2)
  - MAYOR'S OFFICE WALL AND CURTAINS
  - HONKY TONK WALLS
  - NEVARRO PILLARS (QTY. 2)
  - N1

**ITEM COLOR KEY**

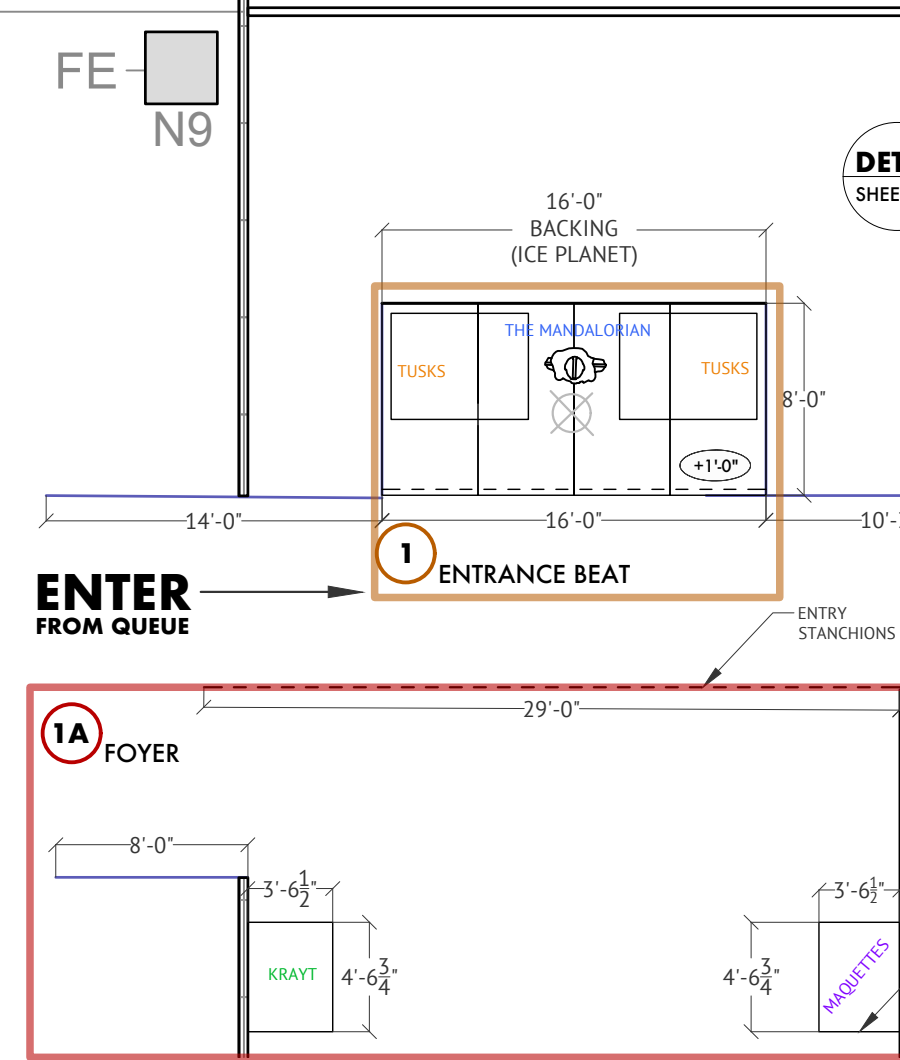
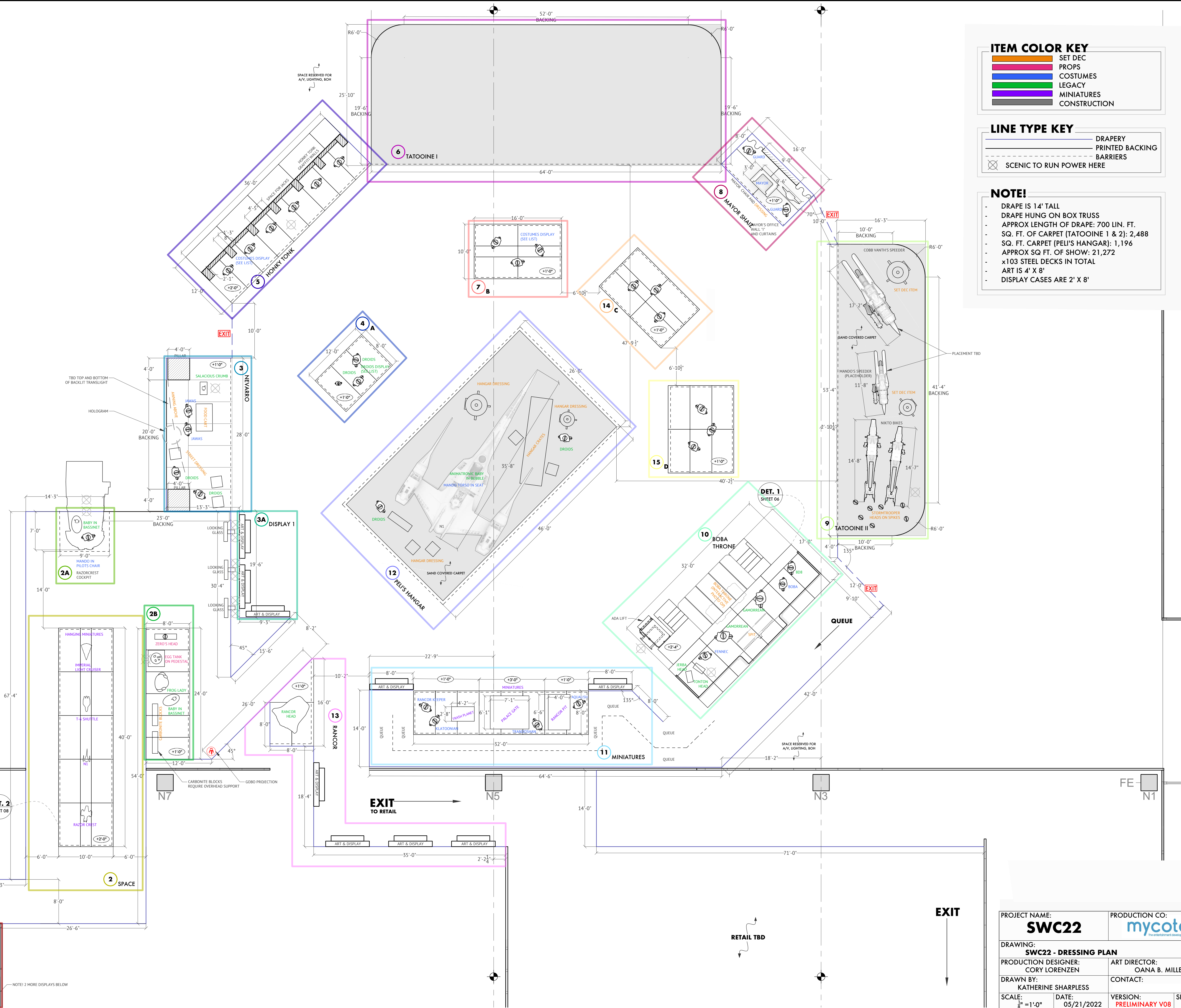
- SET DEC
- PROPS
- COSTUMES
- LEGACY
- MINIATURES
- CONSTRUCTION

**LINE TYPE KEY**

- DRAPERY
- PRINTED BACKING
- BARRIERS
- SCENIC TO RUN POWER HERE

**NOTE!**

- DRAPE IS 14' TALL
- DRAPE HUNG ON BOX TRUSS
- APPROX LENGTH OF DRAPE: 700 LIN. FT.
- SQ. FT. OF CARPET (TATOOWNE I & 2): 2,488
- SQ. FT. CARPET (PELLI'S HANGAR): 1,196
- APPROX SQ FT. OF SHOW: 21,272
- x103 STEEL DECKS IN TOTAL
- ART IS 4' X 8'
- DISPLAY CASES ARE 2' X 8'



PROJECT NAME: <b>SWC22</b>	PRODUCTION CO: <b>mycotoo</b>
DRAWING: <b>SWC22 - DRESSING PLAN</b>	ART DIRECTOR: OANA B. MILLER
PRODUCTION DESIGNER: CORY LORENZEN	CONTACT:
DRAWN BY: KATHERINE SHARPLESS	VERSION: PRELIMINARY V08
SCALE: 1" = 1'-0"	DATE: 05/21/2022
	SHEET NO: <b>7</b>