

**PERMANENT DRESSING ON WAGON:**

- CHAIR THAT SITS AT THE FRONT, CAN BE SALVAGED CUSHION OR SEAT
- ENGINE (OR SIMILAR CAR PART) AT BACK OF WAGON
- MAD MAX FLAGS AT BACK OF WAGON
- HANDLE TO PULL CART AND DECORATIVE CHAINS AROUND HANDLE
- AT LEAST 2 BUNDLES OF DRESSING
- STEERING WHEEL (NON FUNCTIONING)
- PIPES THAT RUN ALONG SIDES OF WAGON
- FLAME CUT OUTS ABOVE BACK WHEELS



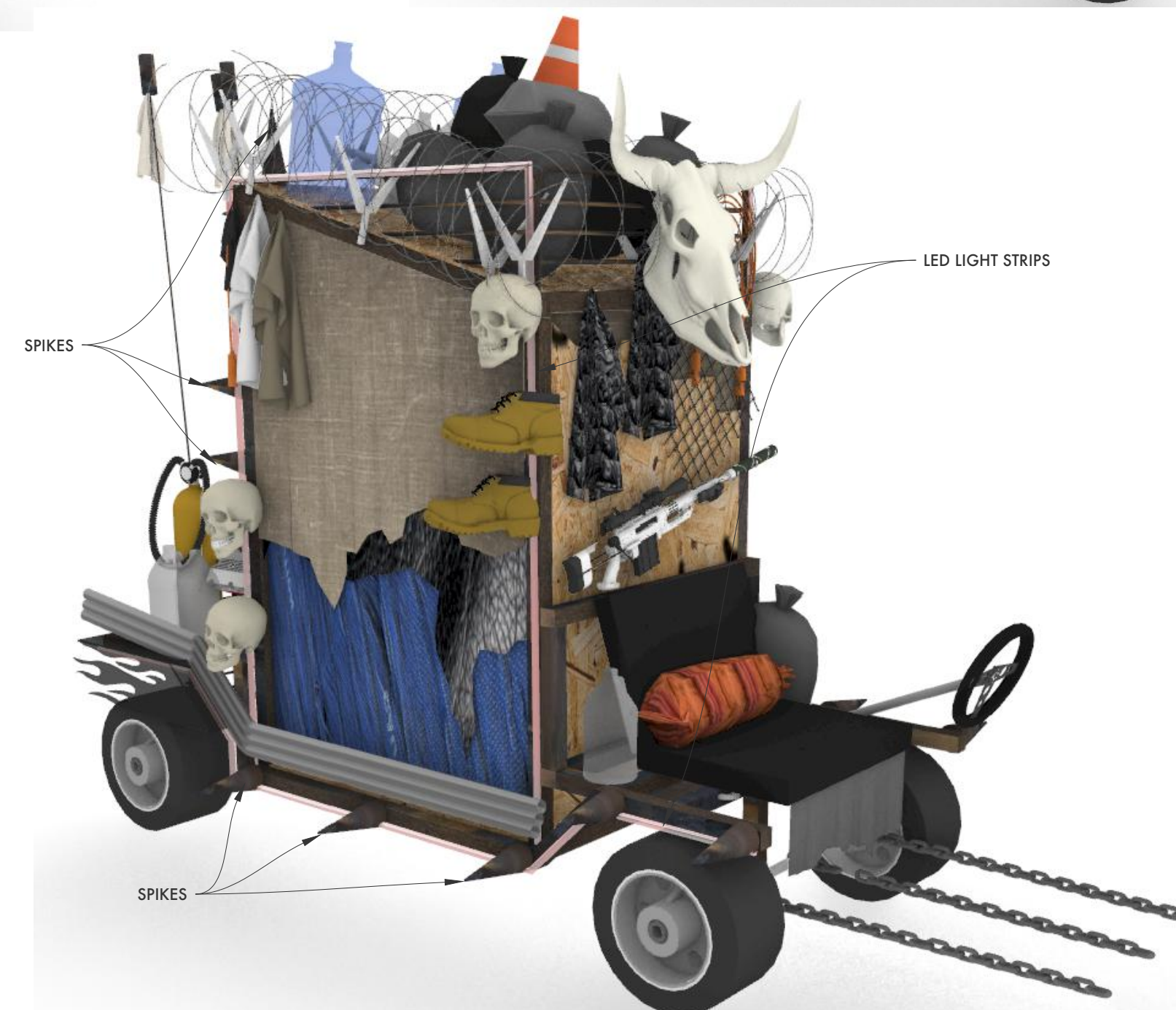
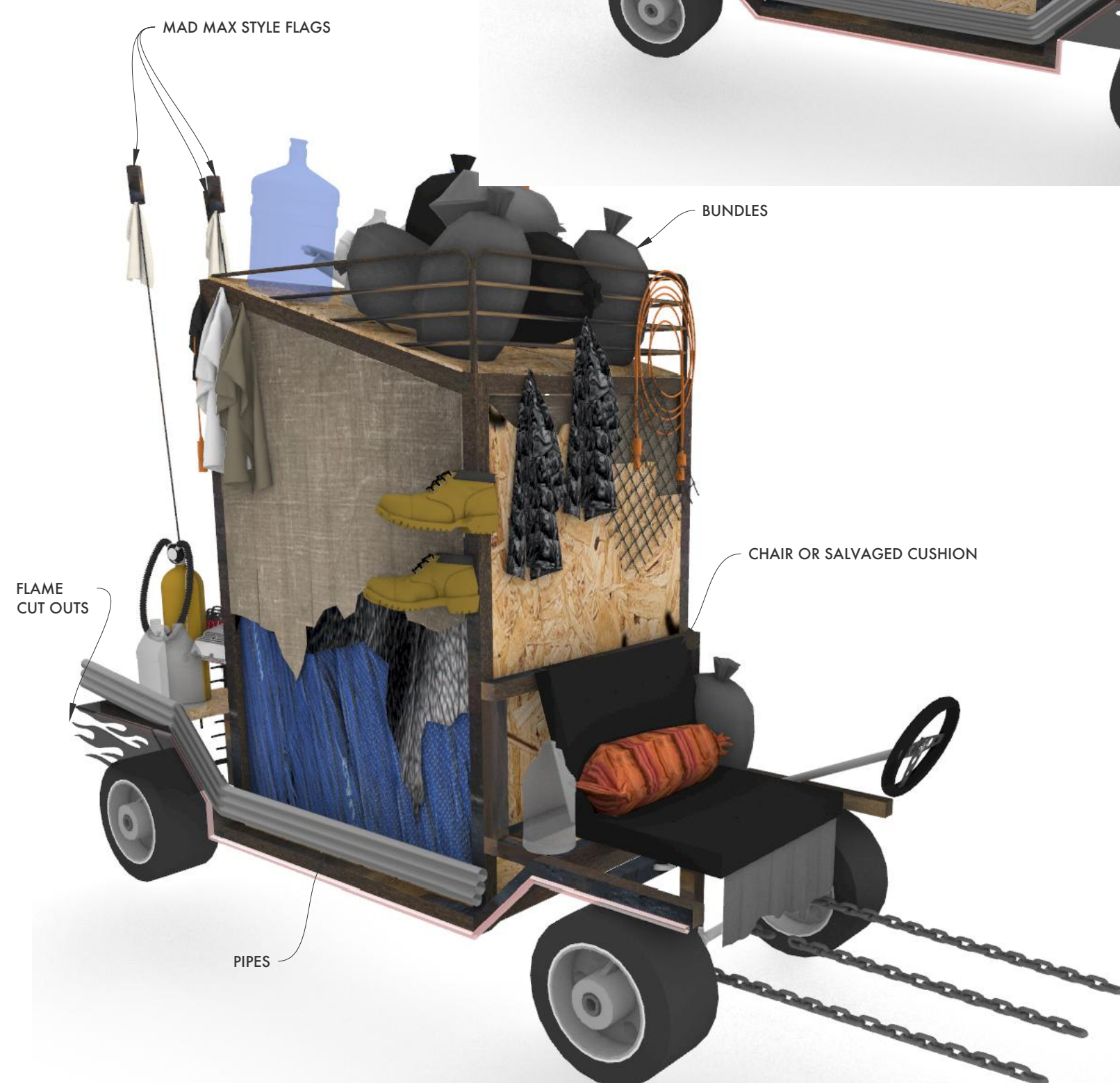
**DRESSING REFERENCE**



**LED LIGHTS REFERENCE**



**FLAGS REFERENCE**



**FINAL SCENE DRESSING - SCENE 12**

**MEDIUM DRESSING - SCENE PROLOGUE, 1, 3,**

**NOTES:**

- FABRIC ON SIDES OF CABIN (PIECED TOGETHER CANVAS, TARP, PAINT CLOTHS, LEATHER)
- CLOTHES, SHOES, HANGING ON THE SIDES
- WATER JUGS, OIL JUGS, CANS
- HANGING CORDS
- BUNDLES OF CLOTHES, TRASH BAGS,
- SALVAGED CAR, TRAFFIC DETRITUS

**RICH DRESSING - SCENE 5, 6,**

**NOTES:**

- ADD BARBED WIRE AT ROOF
- ADD SKULLS, HUMAN AND ANIMAL
- ADD SPIKES ON TO FRAME
- ADD WEAPONS
- ADD MORE BUNDLES OF WARES
- ADD OR TURN ON LED LIGHT STRIPS

**POOR DRESSING - SCENE 8, 9, 10, 11, 12**

**NOTES:**

- REMOVE ALL "RICH DRESSING"
- TURN OFF LED LIGHT STRIPS
- REMOVE 1/2 OF CLOTHES FOR SALE
- REMOVE HALF OF BUNDLES

**NOTES:**

- ALL NON PERMANENT IS REMOVED ON STAGE BY "ARMY"

**SUBJECT TO CHANGE DEPENDING ON EXISTING PROPS!  
DISCUSS WITH DESIGNER**

**RELEASED**

<b>MOTHER COURAGE</b> <small>AND HER CHILDREN</small>		<small>BY DENNY DITCHER</small>	
Directed By: Lee Cohn		Scenic Design: Katherine Sharpless - 262.794.7576	
Production Manager: Matthew Tyrrell		Date: August 30, 2023	
Chapman University Walrus Theatre, Chapman University 415 E. Fiske Ave. Orange, CA 92666		Sheet Size ARCH D	
<b>WAGON DRESSING</b>		SCALE: NTS	
		SHEET 3.5 VERSION 1	