

THE WAY OUT WEST
OCTOBER 5TH-13TH PHILIP CHOSKY THEATRE

WRITTEN BY BY LIZA
BIRKENMEIER
DIRECTED BY KIM WEILD

CHOSKY THEATRE
5000 FORBES AVE
PITTSBURGH, PA

PRODUCTION TEAM

ADRYAN MILLER – GORDER
SCENE DESIGNER
KATHERINE SHARPLESS, KATY FETROW
ASSISTANT SCENE DESIGNER
JACOB WESSON
LIGHTING DESIGNER
MOHAN YEH
COSTUME DESIGNER
ANTHONY SCHULTZ
SOUND DESIGNER
LUCY SCHERRER
MEDIA DESIGNER
KYRIE BAYLES
PRODUCTION MANAGER
TECHNICAL DIRECTOR

The designer is responsible for the final aspects of the production only, and the production of these drawings under their sole responsibility. The designer assumes no liability for any errors or omissions that may occur in the production of these drawings.

DATE: 4/12/2018

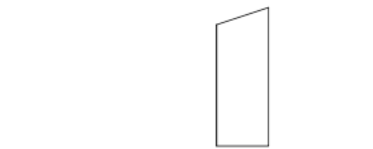
SCALE: 1/2" = 1'-0"

REVISION: 5

DRAWN BY: KS

PLATE NO:
Sheet Name

5



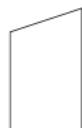
SM HOUSE - WALL A BACK
21 5 1/2"=1'-0"



SM HOUSE - WALL A SIDE
22 5 1/2"=1'-0"



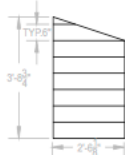
SM HOUSE - WALL A FRONT
20 5 1/2"=1'-0"



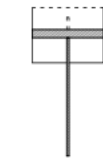
SM HOUSE - WALL B BACK
18 5 1/2"=1'-0"



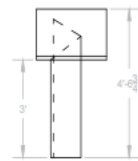
SM HOUSE - WALL B SIDE
19 5 1/2"=1'-0"



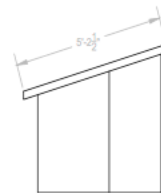
SM HOUSE - WALL B FRONT
17 5 1/2"=1'-0"



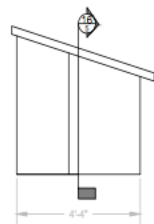
SM HOUSE - SECTION
16 5 1/2"=1'-0"



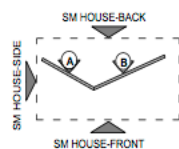
SM HOUSE - SIDE
15 5 1/2"=1'-0"



SM HOUSE - BACK
14 5 1/2"=1'-0"



SM HOUSE - FRONT
13 5 1/2"=1'-0"



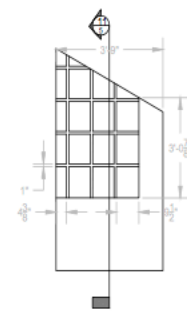
SM HOUSE - PLAN
12 5 1/2"=1'-0"



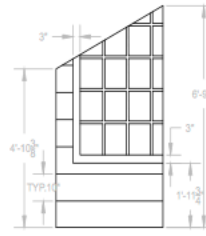
LG HOUSE - WALL A SECTION
11 5 1/2"=1'-0"



LG HOUSE - WALL A SIDE
10 5 1/2"=1'-0"



LG HOUSE - WALL A BACK
8 5 1/2"=1'-0"



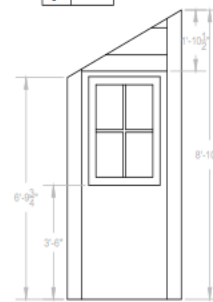
LG HOUSE - WALL A FRONT
7 5 1/2"=1'-0"



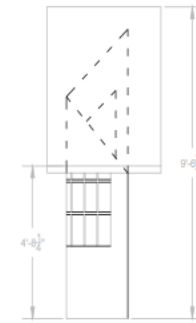
LG HOUSE - WALL B BACK
6 5 1/2"=1'-0"



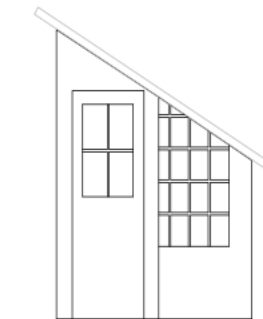
LG HOUSE - WALL B SIDE
9 5 1/2"=1'-0"



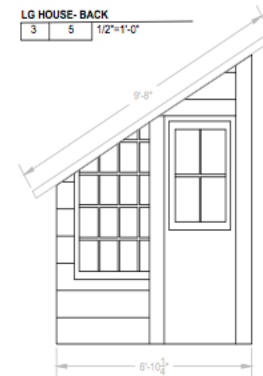
LG HOUSE - WALL B FRONT
5 5 1/2"=1'-0"



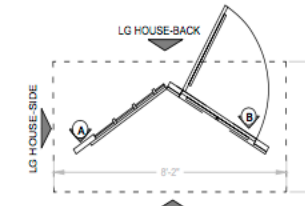
LG HOUSE - SIDE
4 5 1/2"=1'-0"



LG HOUSE - BACK
3 5 1/2"=1'-0"



LG HOUSE - FRONT
2 5 1/2"=1'-0"



LG HOUSE - PLAN
1 5 1/2"=1'-0"