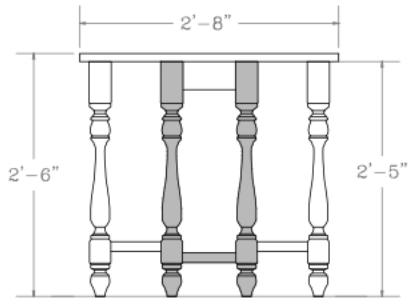
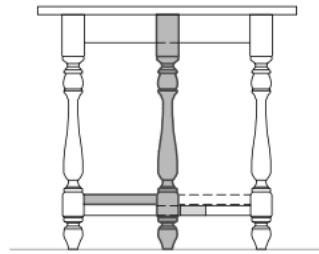


# GATE LEG TEA TABLE

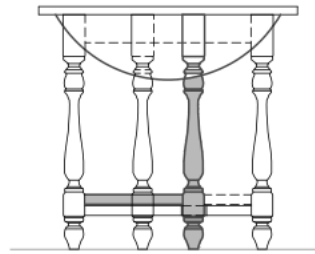
SCALE: 1"=1'-0"



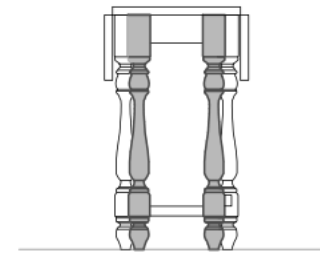
2 OPEN TABLE FRONT VIEW



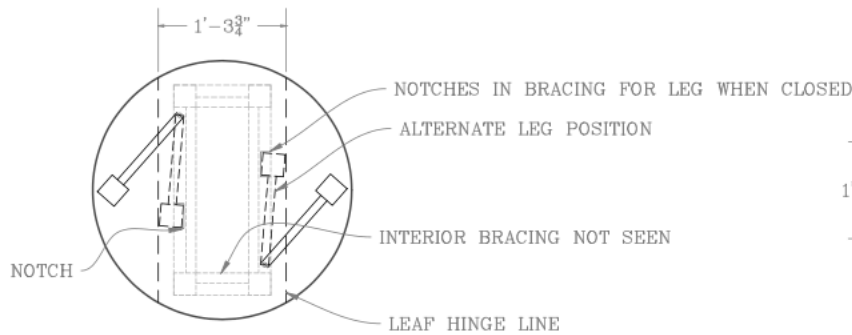
3 OPEN TABLE SIDE VIEW



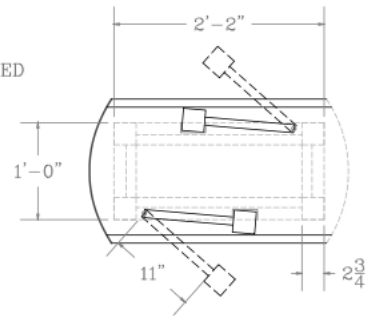
5 CLOSED TABLE FRONT VIEW



6 CLOSED TABLE SIDE VIEW



1 OPEN TABLE TOP VIEW



4 CLOSED TABLE TOP VIEW

7 PAINT ELEVATION:  
SCALE: 1-1/2"=1'-0"



PAINT NOTES:  
1. LOW LUSTRE FINISH  
2. MAHOGANY COLOR AND TEXTURE, DISTRESSED TO LOOK SCRATCHED UP, AGED, AND DIRTY  
3. PAINTED 2" "INLAY" FLORAL BAND AROUND EDGE  
4. LEGS AND BRACING SHOULD MATCH DISTRESSED MAHOGANY

8 TABLE LEG. NTS.  
ADAMS WOOD A0914-28



9 INLAY PATTERN REF.  
NOT BRASSY, SEE ELEV.



REFERENCE TABLES:



CARNEGIE MELLON UNIVERSITY  
SCHOOL OF DRAMA  
5000 Forbes Ave.  
Pittsburgh, PA 15213

## INTO THE WOODS

Music and Lyrics by Stephen Sondheim  
Book by James Lapine  
Directed and Choreographed by Matthew Gardiner  
Music Direction by Rick Edinger

PHILLIP CHOSKY  
THEATRE  
February 21-29 2020

Scenic Design:  
Katherine Sharpless

Asst. Scenic Designer:  
Lena Banchero

Asst. Scenic Designer:  
Mengyi Liu

Project Manager:  
Marisa Rinchiuso

Job Lead:  
Julien Sat-Vollhardt

Production Management:  
Jessica Myers

Costume Design:  
Oona Natesan

Lighting Design:  
Alexander Talbot

Master Electrician:  
Shawn Nielson

Sound Design:  
David Gotwald

Draft:  
Katherine Sharpless

Date:  
11/22/19

Props Master:  
Todd Kulik

Props Artisan:  
Kristin Ward

## GATE LEG TEA TABLE

SCALE:  
1"=1'-0"

NOTES:  
1. STOOD ON IN ACT ONE  
2. LEAVES COLLAPSE DOWN IN ACT TWO OPENING NUMBER, THINGS ON THE TABLE SLIDE OFF

REFERENCE: <http://www.artpane.com/Furniture/F1003.htm#ArtpaneWinTop>